

T.7N., R.4E., S.L.B.&M.

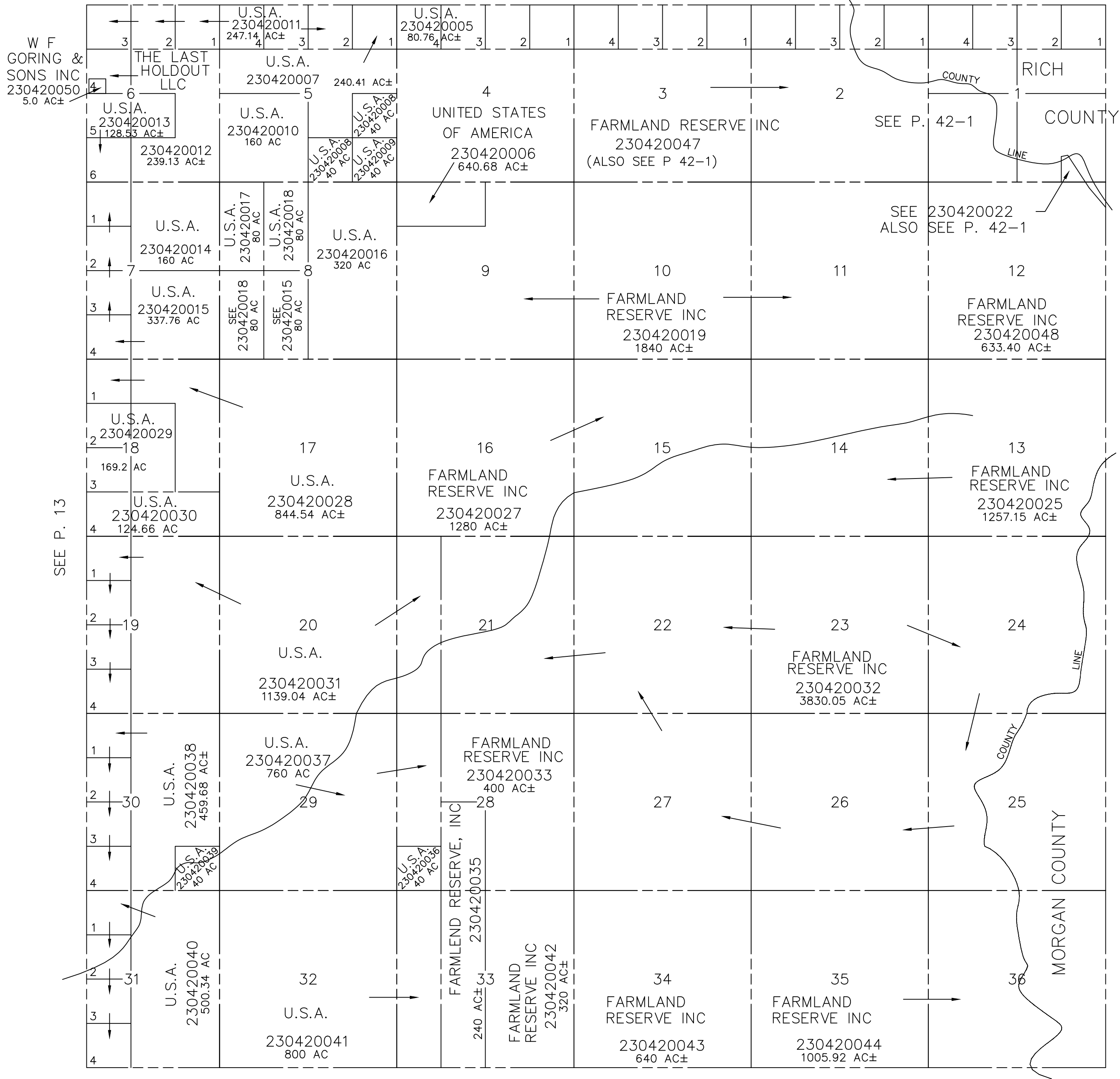
IN WEBER COUNTY

SCALE 1" = 2400'

TAXING UNIT: 58

SEE P. 46-2

ALSO SEE P. 42-1



SEE P. 13

SEE P. 43

SEE P. 11

NOTE: WEBER/MORGEN ASSESSMENT LINE CHANGED TO COUNTY LINE - 1998